



# Evolving Mio: v0.1.1 Feature Parity

Closing the gap between prototype and scalable product.

**FRONT END // USER FEATURES**

COMPONENT: DASHBOARD\_VIEW // STATUS: PARITY ✓

**BACKEND // ADMIN OPERATIONS**

ARCHITECTURE: MICROSERVICES\_V2 // STATUS: PARITY ✓

API ENDPOINT: /api/v1/migrate // METHOD: POST

**DROPPED ITEMS & ALERTS**

- ⚠ ALERT: LEGACY\_MODULE\_DEPRECATED // REASON: OBSOLETE ✕
- ⚠ DROPPED: v0.1.0\_EXPERIMENTS // ACTION: ARCHIVED ✕
- ⚠ NOTE: SECURITY\_PATCH\_PENDING // PRIORITY: HIGH ✕

VERSION: v0.1.0 // DEPRECATED  
MODULE: EXP\_FEATURE\_FLAG // REMOVED

**VERSION: v0.1.1 // STATUS: PUBLISHED**

**v0.1.0** gave Mio a voice and a face, but only **Telegram** users experienced them. The web client remained text-only. Voice messages from Fish Audio and selfies from Gemini were generated by the server, but silently dropped on the web.

## Telegram (v0.1.0)

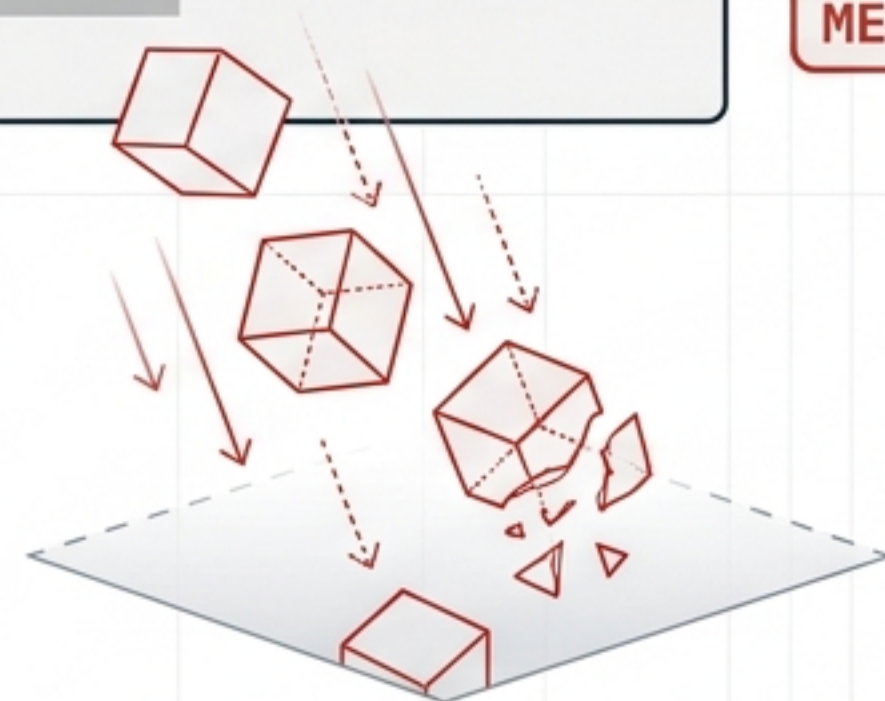


**MEDIA: ACTIVE**

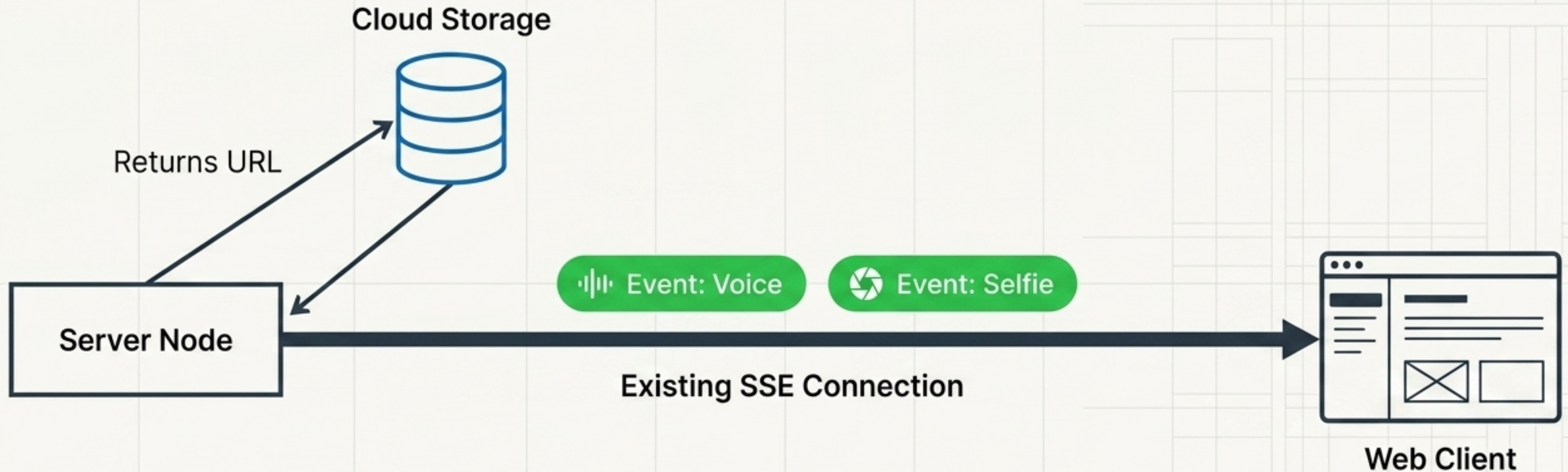
## Web (v0.1.0)



**MEDIA: DROPPED**



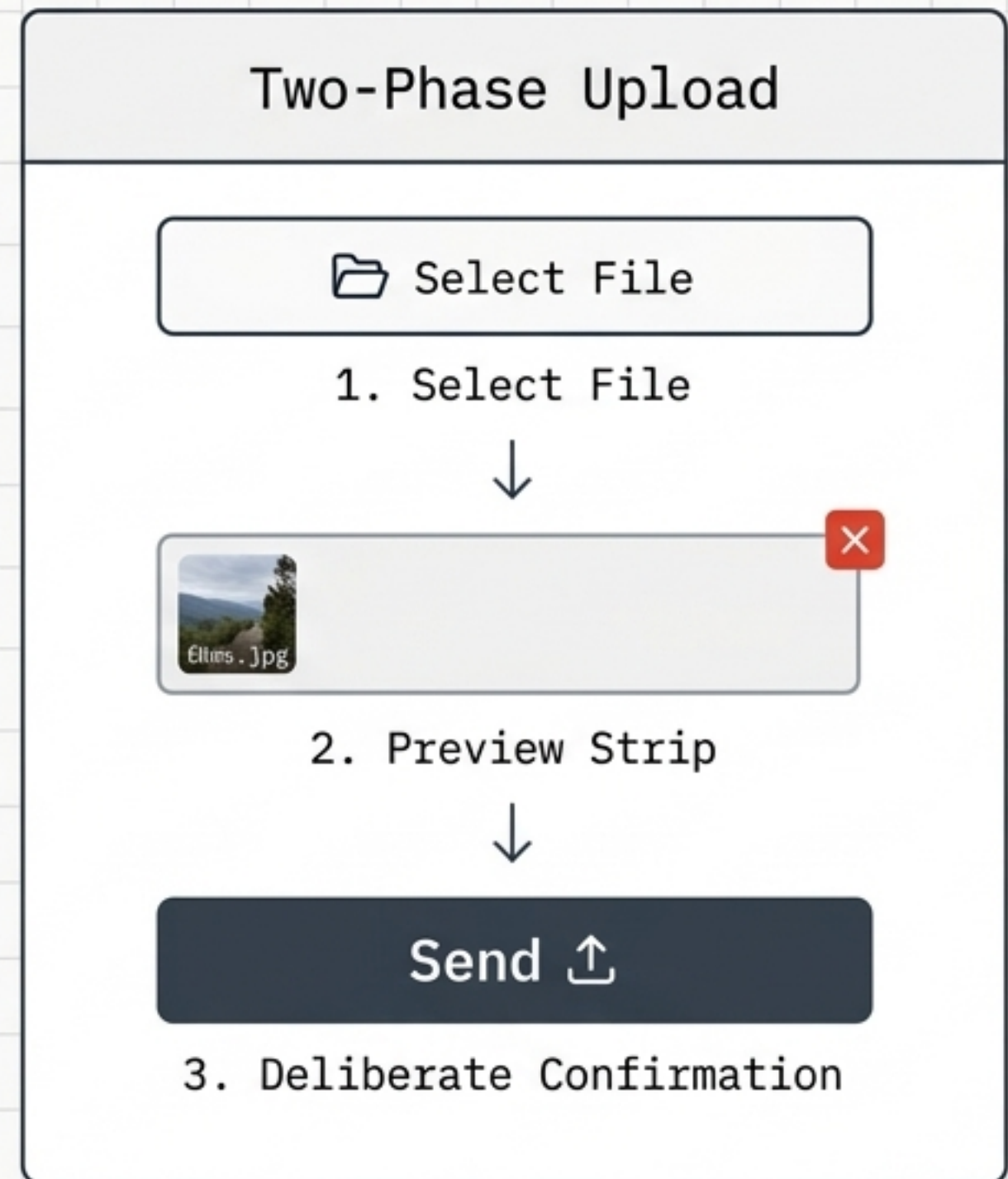
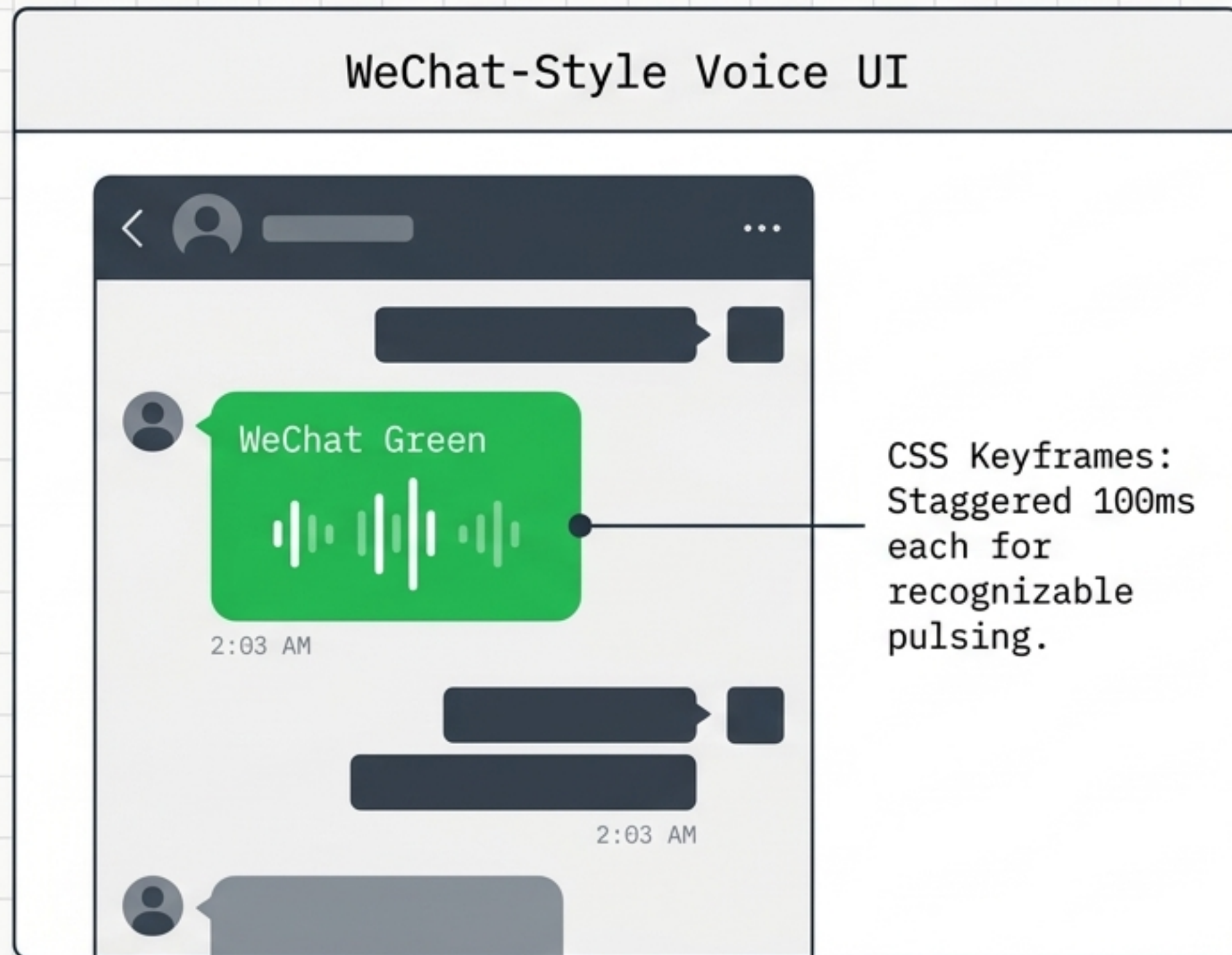
# Media Delivery Flow: SSE Architecture



No polling. No separate API call.  
Two new event types carried  
on the same SSE stream.

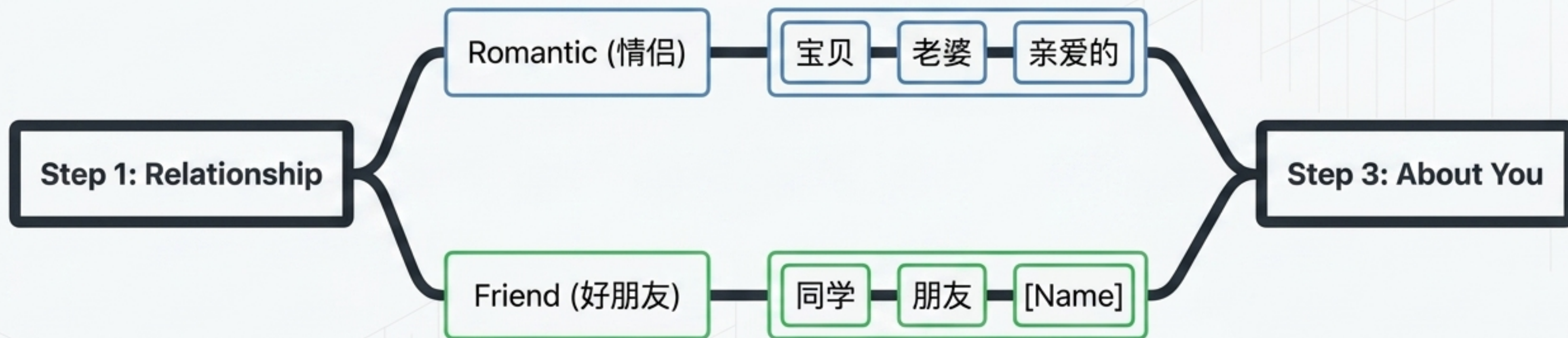
# Familiarity Reduces Friction

Inline selfies render without lightboxes, while uploads require deliberate confirmation to prevent accidental shares.



# Relationship-Driven Onboarding

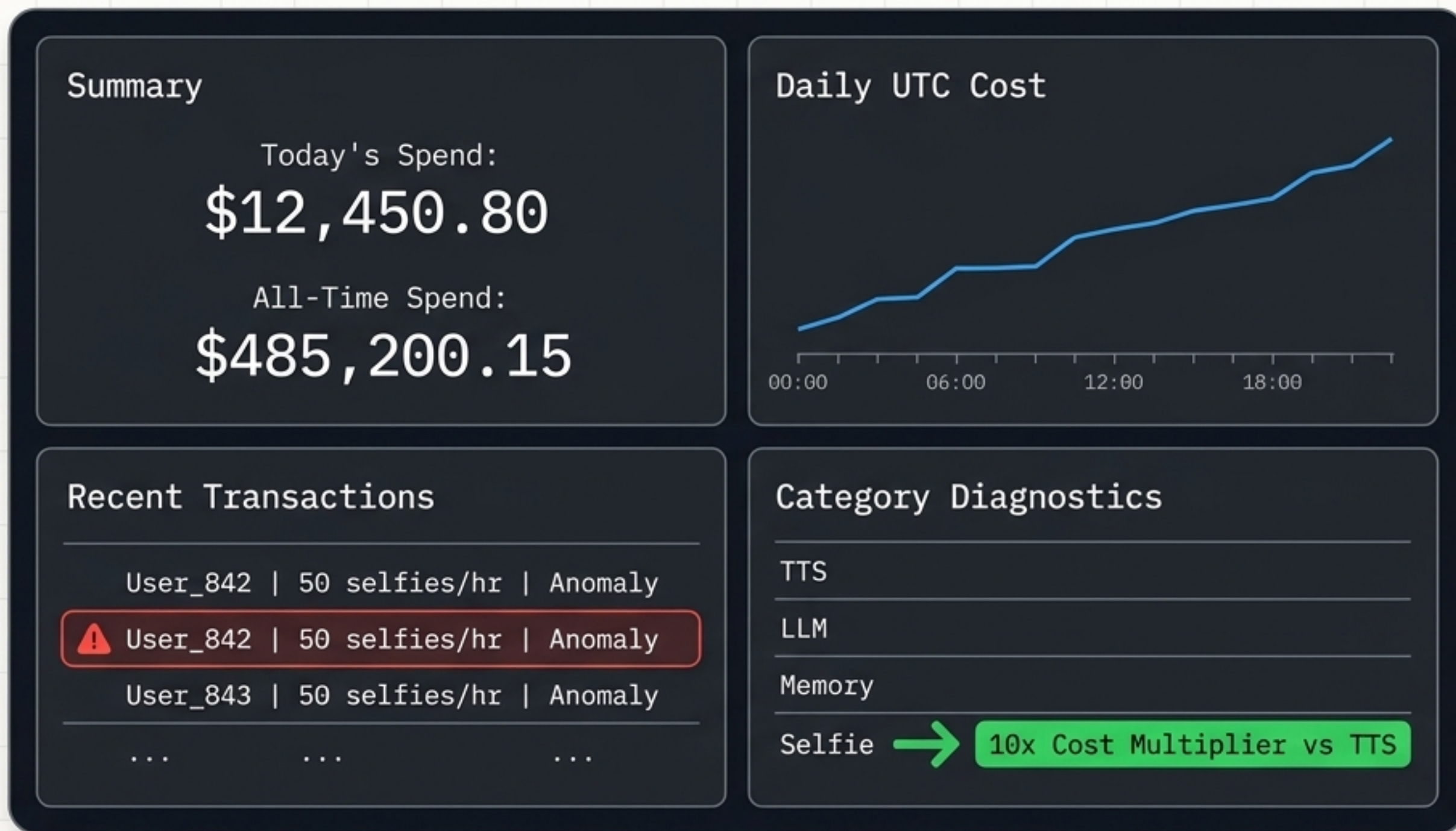
Timezone auto-detects locally via `Intl.DateTimeFormat()`.  
Question count reduced from 14 to 3.



Pattern: `depends_on + options_map`

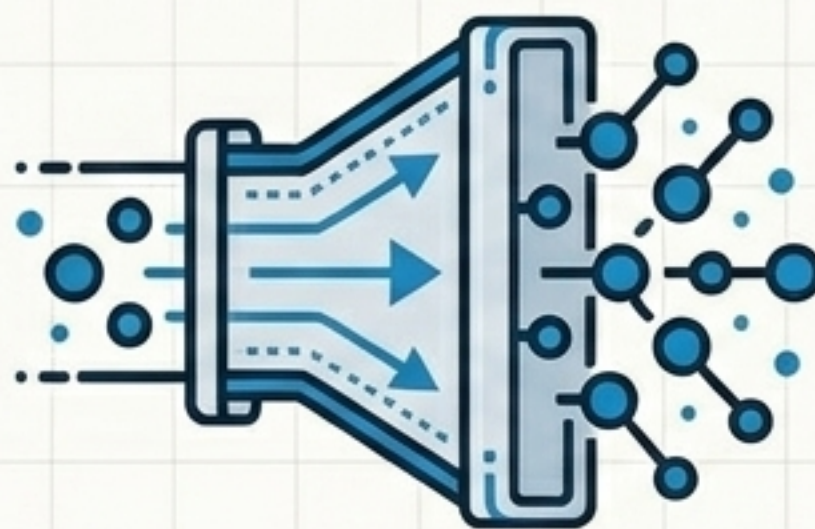
# Operator Visibility: Admin Cost HUD

Tracking multi-persona economics requires granular visibility.



# 30-Day Message Retention Policy

No soft deletes. No cold storage. Raw logs are redundant after memory extraction. A database that grows without bound is a liability.



Day 1: Raw Chat Ingestion

Day 3: Memory Extraction

Day 30: pg\_cron Batch Deletion

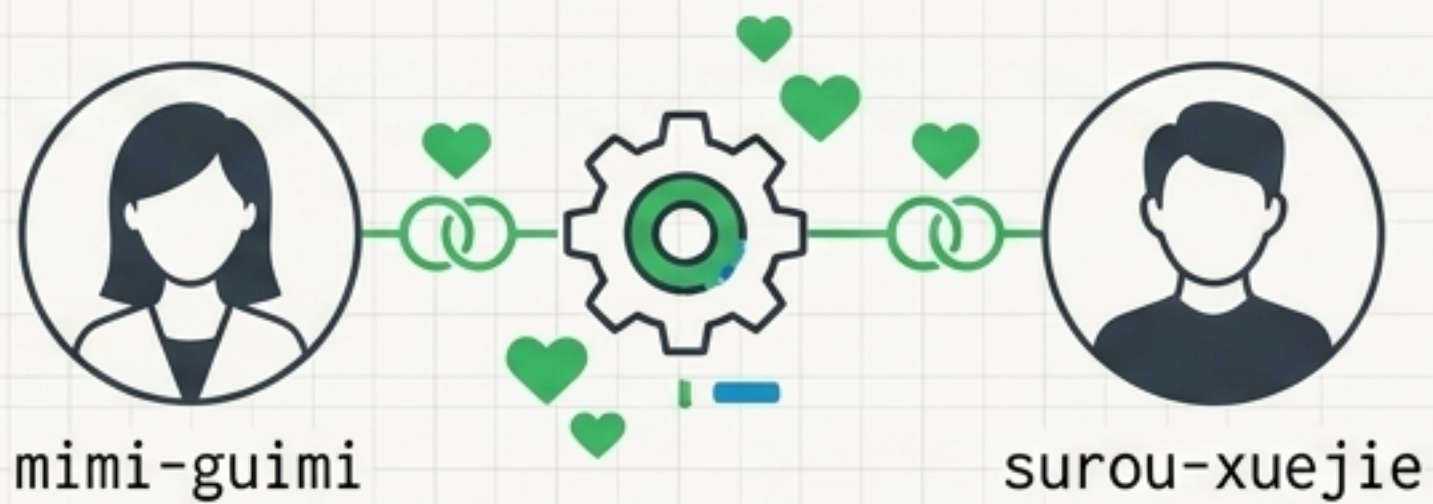
Runs daily at 4am UTC  
(off-peak Asian timezones).

B-tree index on created\_at  
ensures efficient batch deletes.

# Persona Refinement: Behavior & Localization

## Contextual Romantic Logic

Choosing the 情侶 (romantic) relationship now triggers tailored affection, jealousy, and goodnight routines rather than generic friendliness.



## Genuine Linguistic Identity

Keke's persona operates strictly in Traditional Chinese, establishing authentic Taiwanese identity.

Standard (Simplified)		Keke (Traditional)
软件	.....	軟體
消息	.....	訊息
挺好的	.....	蠻好的

# Structural Reinforcement: Critical Fixes

Diagnostics & Repair

## Discover Page Crash



### Cause:

API response shape changed.

### Fix:

```
Defensive check  
personas ?? []
```

Diagnostics & Repair

## Payload Type Drift



### Cause:

Server & client expecting  
different media shapes.

### Fix:

```
Unified AgentResponse type  
{ content, media? }
```

Diagnostics & Repair

## Ghost Audio Playback



### Cause:

Background playback  
persisting after navigation.

### Fix:

```
VoicePlayer unmount  
useEffect cleanup.
```

# v0.1.1 Synthesis: Prototype to Product

Dimension	v0.1.0 (Prototype)	v0.1.1 (Product)
Media Delivery	Telegram only; Web silently drops files.	Total parity; SSE streaming; native inline UI.
Onboarding	4 questions; static workflow; redundant timezone prompt.	3 questions; relationship-driven logic tree.
Economics	Zero visibility; flat rate estimation.	Granular Admin HUD; anomaly detection.
Database Health	Linear, unbounded message accumulation.	Self-cleaning; 30-day pg_cron hard deletions.